



The Northern Association of TESOL invites you to...

Assessment Through the Lens of the Action-oriented Approach of the CEFR: Answering the Wh- Questions (Randi Harlev, Ruppin Academic Center)

Date: Saturday 11th December 2021

Time: 10am - 11.45am GMT (doors open 10am; talk starts 10.15am)

Venue: This is a free online event.

[Register here](https://forms.gle/1Uhu1Z8XNXvHwmev5)

<https://forms.gle/1Uhu1Z8XNXvHwmev5>

Registration closes at 5pm the day before the event.

Zoom details will be emailed to you the day before the event.

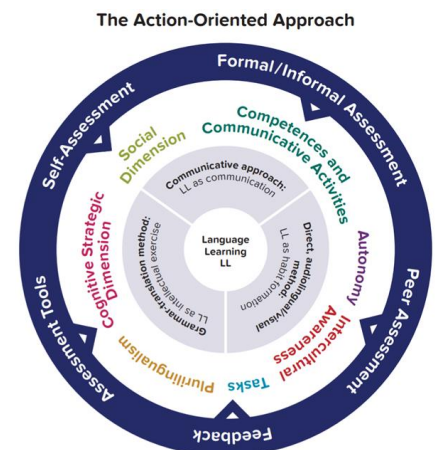
This workshop will begin by examining the types of activities and tasks that might be assessed, particularly when using the Common European Framework of Reference for Languages (CEFR). We will consider assessment of the four modes of communication: reception, production, interaction and mediation. We will then address the wh- questions of assessment through the action-oriented approach. Why do we assess our students anyway? What kinds of assessment are inherent in the action-oriented approach? Who should do the assessing, and when? Where does the assessment take place? And most importantly, how can we assess student 'products'?

In the second part of the workshop, participants will work in groups in breakout rooms to analyze various student 'products' and recommend ways in which they can be assessed. Groups will then have the opportunity to share their recommendations and create a shared 'bank' of assessment activities.

The action-oriented approach of the CEFR may be viewed as a meta-approach, as it subsumes within it many other second language learning approaches, theories and methods. It also suggests that rather than focusing on language acquisition or language learning, we as teachers should focus on what the learner can actually do with the language. This important distinction underpins everything we do including the ways in which we conceptualize our work. It impacts not only teaching and learning, but also assessment.

This workshop will therefore be both practical and theoretical. It will be relevant to any teachers, researchers or practitioners who are using the CEFR as well as members and colleagues who have an interest in language assessment practices. Everyone is welcome.

Bio: Randi Harlev is currently managing a national CEFR and EMI reform project at Ruppin Academic Center in Israel focused on implementing an action-oriented approach to ESAP. She has taught in Israel, China, the UK and the US; has trained pre-service and in-service EFL teachers; and has developed blended learning courses for commercial publishers and universities worldwide. Randi holds a PhD in Organizational Behavior/Sociolinguistics and an MA TESOL. Her research is in assumptions in language teaching and in teamwork.



From [Communicative to Action-Oriented: A RESEARCH PATHWAY](#) Dr. Enrica Piccardo

Website: www.natesol.org

Facebook: @NATESOLorg

Twitter: @NATESOL_Tweets

Become a NATESOL Member... As a voluntary organisation, membership subs have been our source of income. Please help out by becoming a member (email natesolcommittee@gmail.com) or donate to us via [Go Fund Me](#).